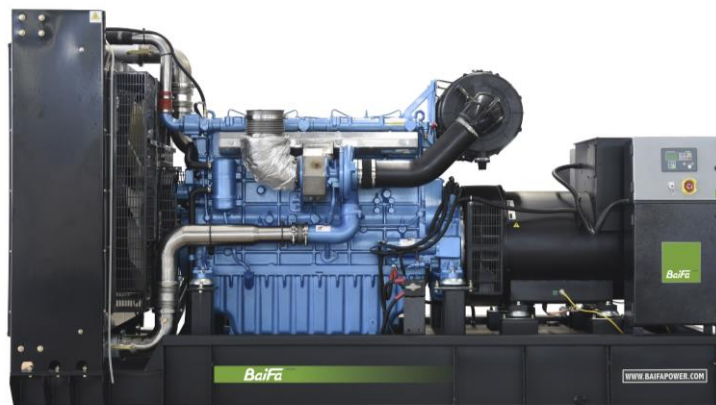


MODEL: BF-BD220**400V | 1500rpm | 50Hz****ESP**

Standby Power

220 kVA**PRP**

Prime Power

200 kVA**ENGINE****Baudouin****6M16G220/5****ALTERNATOR****STAMFORD****N200G4****GENERAL FEATURES**

Engine: Baudouin 6M16G220/5

Alternator: single bearing, IP23, insulation class H

40°C radiator, fans are driven by belt, with safety guard

Dry type air filter, fuel filter & oil filter

Vibration damper

Standard control panel

24V charging alternator

Exhaust bellows, elbows, flange & muffler

Lead-acid batteries, rack and cables

User manual

MODEL: BF-BD220**400V | 1500rpm | 50Hz****GENERATOR RATINGS**

Voltage	Hz	Phase	PF (COSΦ)	Standby Amps	Standby Ratings (kW / kVA)	Prime Ratings (kW / kVA)
440/254	50	3	0.8	289	176kW/220kVA	160kW/200kVA
415/240	50	3	0.8	306	176kW/220kVA	160kW/200kVA
400/230	50	3	0.8	318	176kW/220kVA	160kW/200kVA
380/220	50	3	0.8	334	176kW/220kVA	160kW/200kVA

Prime Power (PRP): Prime power is available for an unlimited number of annual hours in variable load application, in accordance with GB/T2820 (eqv ISO 8528) ; A 10% overload capability is available for a period of 1 hour within a 12-hour period of operation.

Standby Power Rating (ESP): The standby power rating is applicable for supplying emergency power for the duration of a utility power interruption. No overload, utility parallel or negotiated outage operation capability is available at this rating.

SALES PROMISES

Baifa Power provides a full line of brand new and high quality products. Each and every unit is strictly factory tested.

Warranty is according to our standard conditions: 15 months from the date BAIFA sold to the first buyer or one year after installation or 1000 running hours (accumulated), whichever comes first.

Service and parts are available from Baifa Power or distributors in your location.

MODEL: BF-BD220**400V | 1500rpm | 50Hz****ENGINE SPECIFICATION**

Manufacturer / Model	Baudouin 6M16G220/5
Air intake system	Turbo, intercooling
Fuel system	Mechanical pump
Cylinder arrangement	6 cylinders in line
Displacement	9.726 L
Bore and stroke	126×130 mm
Compression ratio	17:1
Rated speed	1500rpm
Max. Standby power at rated speed	204KW
Governor type	Electronic

Exhaust System

Exhaust gas flow	38.15 m ³ /min
Exhaust temperature	600°C
Max back pressure	6 kPa

Air Intake System

Max intake restriction	7 kPa
Combustion air flow	14.4 m ³ /min
Air flow required for radiator	415 m ³ /min

MODEL: BF-BD220**400V | 1500rpm | 50Hz****Fuel System**

Fuel consumption @ 100% (Prime Power) Load	193.8 g/kWh	43L/h
Fuel consumption @ 75% (Prime Power) Load	193.9 g/kWh	33L/h
Fuel consumption @ 50% (Prime Power) Load	201.6 g/kWh	23L/h

Oil System

Total oil capacity	30L
Oil consumption ratio based on fuel consumption data	$\leq 0.2\%$
Oil sump capacity	19-22L

Cooling System

Coolant capacity	42L
Max water temperature	105°C

MODEL: BF-BD220**400V | 1500rpm | 50Hz**

ALTERNATOR SPECIFICATION

Industrial alternators meet the requirements of the relevant parts of the BS5000, VDE 0530, NEMA MG1-22, IEC34, CSA 22.2-100 and AS1359.

Alternator Data

Number of Phase	3
Connecting Type	3 Phase and 4 Wires, Y type connecting
Number of Bearing	1
Power Factor	0.8
Protection Class	IP23
Altitude	≤1000m
Exciter Type	Brushless exciting
Insulation Class/Temperature Rise	H/H
Telephone Influence Factor (TIF)	< 50
THF	< 2%
Alternator Capacity	200kVA
Alternator Efficiency	90.0%

MODEL: BF-BD220**400V | 1500rpm | 50Hz****GENERATING SET DATA**

Related range of voltage setting	$\geq \pm 5\%$
Steady-state voltage deviation	$\leq \pm 1\%$
Transient voltage deviation (100 % sudden power decrease)	$\leq +25\%$
Transient voltage deviation (sudden power increase)	$\leq -20\%$
Voltage recovery time (100 % sudden power decrease)	$\leq 6S$
Voltage recovery time (sudden power increase)	$\leq 6S$
Related range of frequency setting	0-5% adjustable
Steady-state frequency band	$\leq 1.5\%$
Transient frequency deviation (100 % sudden power decrease)	$\leq +12\%$
Transient frequency deviation (sudden power increase)	$\leq -10\%$
Frequency recovery time (100 % sudden power decrease)	$\leq 5S$
Frequency recovery time (sudden power increase)	$\leq 5S$

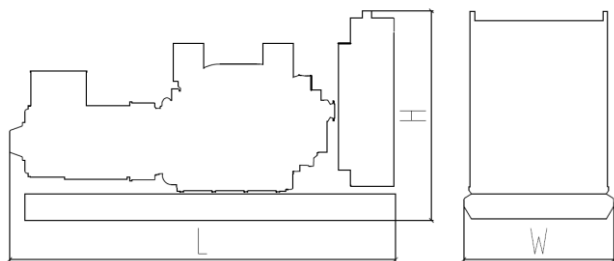
STANDARD FEATURES

Standard auto control system	Exhaust system (including until muffler)	Documents
Oil drain valve	Starting batteries (maintenance-free & watering-free) with connective wires	MCCB

Base fuel tank

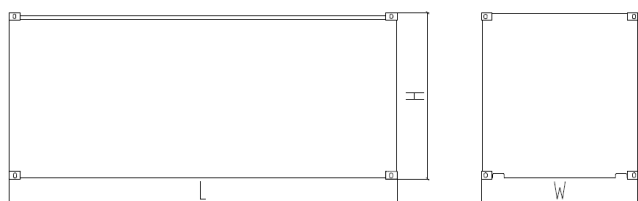
MODEL: BF-BD220**400V | 1500rpm | 50Hz****OPTIONS**

Daily fuel tank	Rainproof type	Remote control panel
Alternator heater	Soundproof type	Paralleling system
Spare parts	Trailer type	Switch box
Automatic transfer switch		

DIMENSIONS & WEIGHT**Standard Configuration (open type with base fuel tank)**

Overall Dimensions: 2680×1020×1570 mm

Weight: 2120 kg

**Soundproof Type**

Overall Dimensions: 3590×1310×2050 mm

Weight: 3020 kg

Specifications are subject to change without notice.